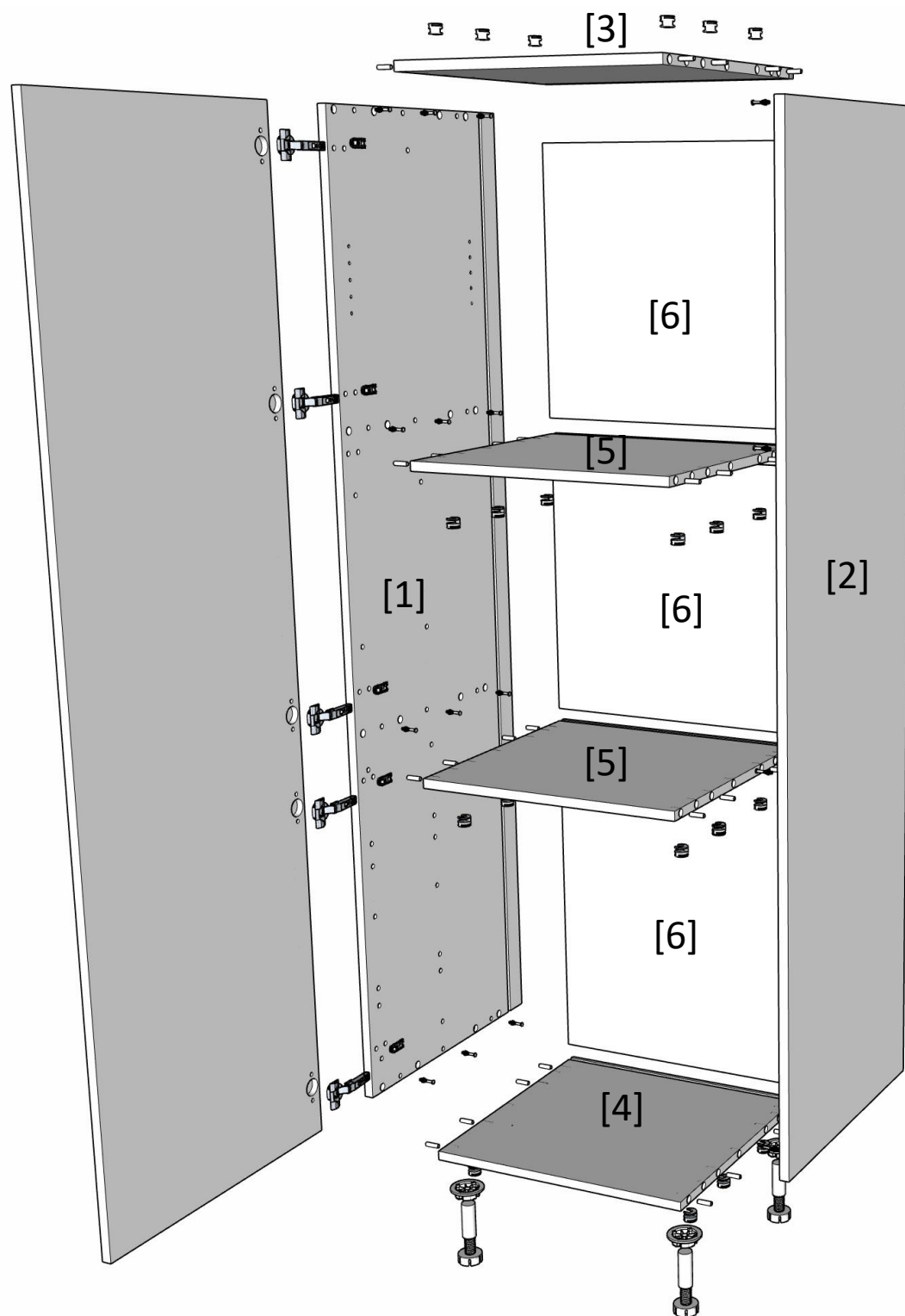
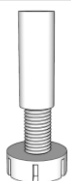
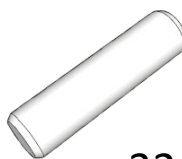


NOTICE DE MONTAGE - COLONNE

Joue gauche	[1]
Joue droite	[2]
Panneau haut	[3]
Panneau bas	[4]
Séparateur	[5]
Fond	[6]


Minimum x4

Minimum x4

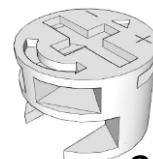

x12



x32

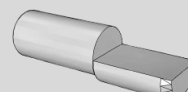
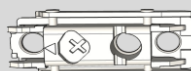
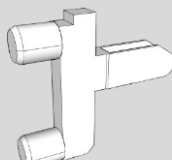


x24



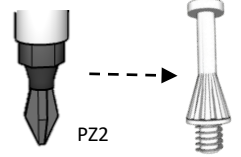
x24

ACCESSOIRES OPTIONNELS

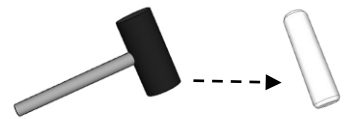
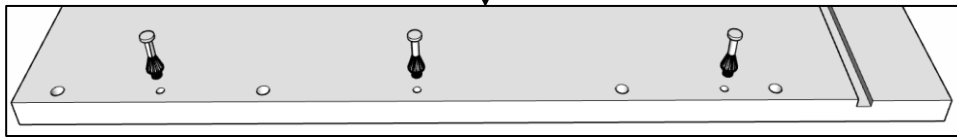


MONTAGE D'UNE COLONNE

1

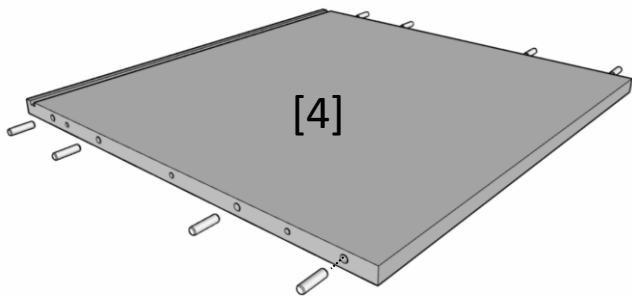


[2]

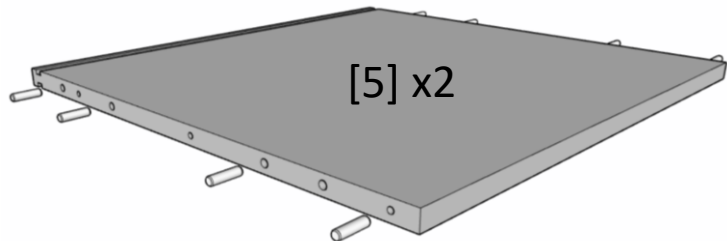


2

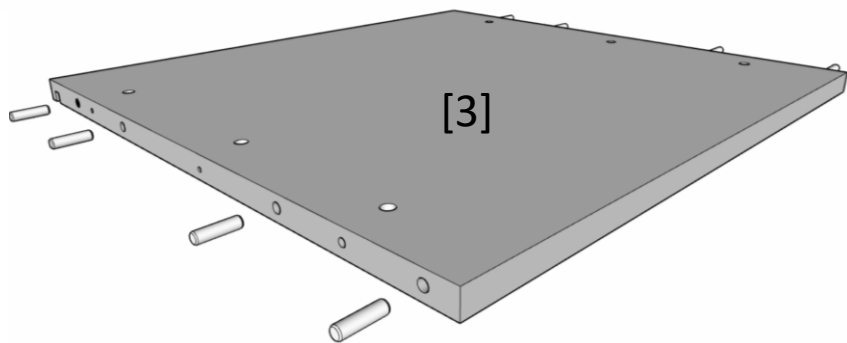
[4]



[5] x2



[3]



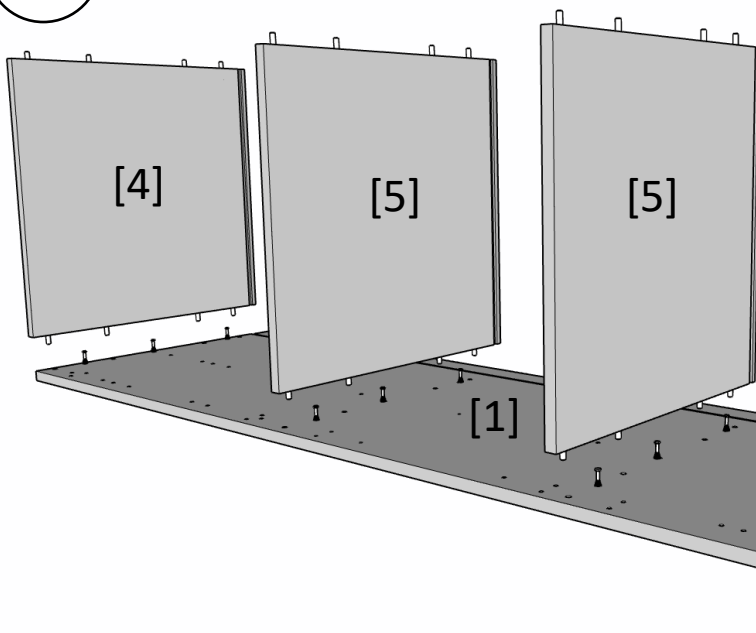
3

[4]

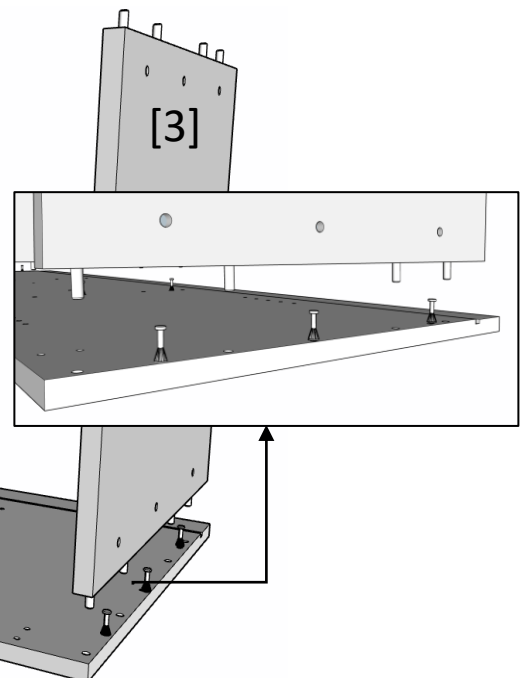
[5]

[5]

[1]

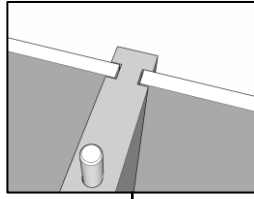


[3]

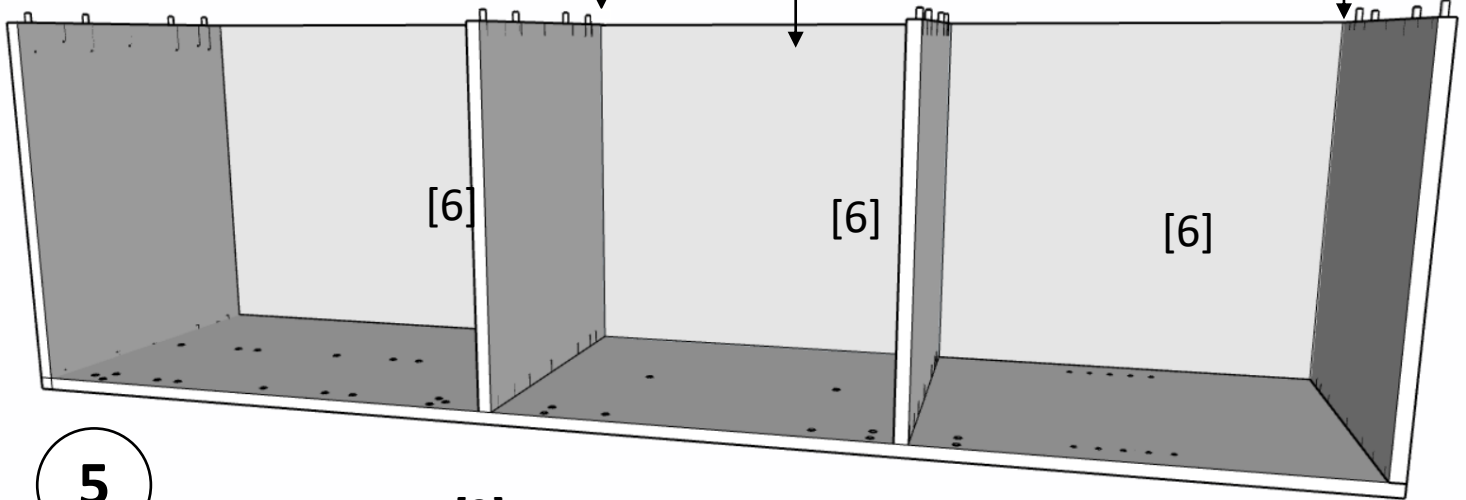
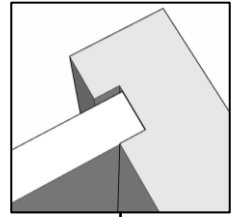


MONTAGE D'UNE COLONNE

4

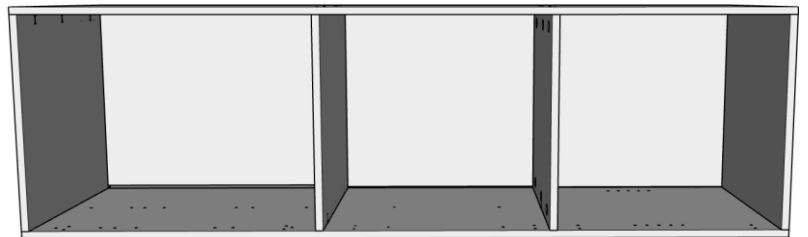
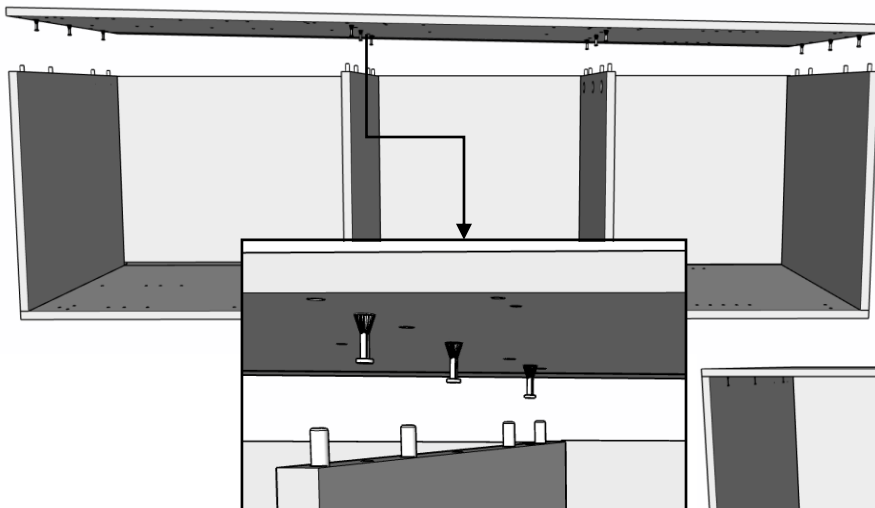


*Pas de fond au milieu
pour une colonne four*

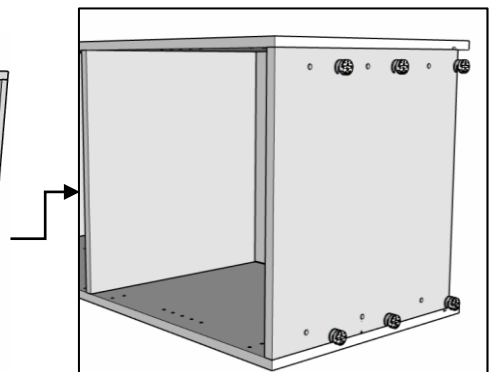
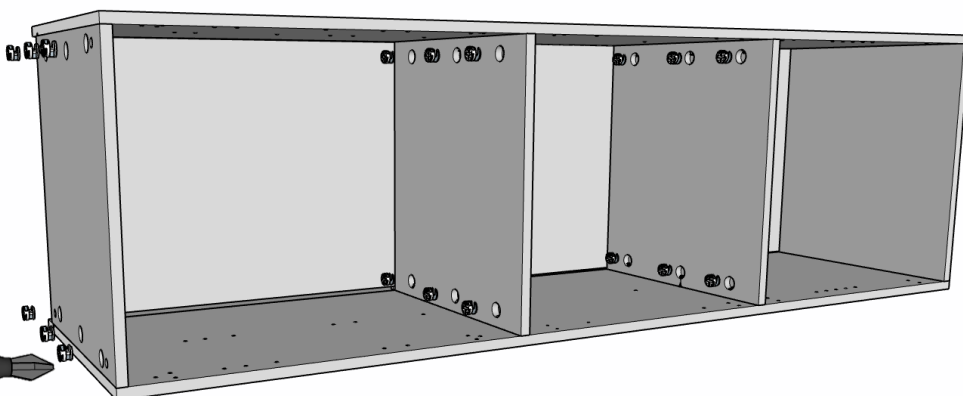


5

[2]

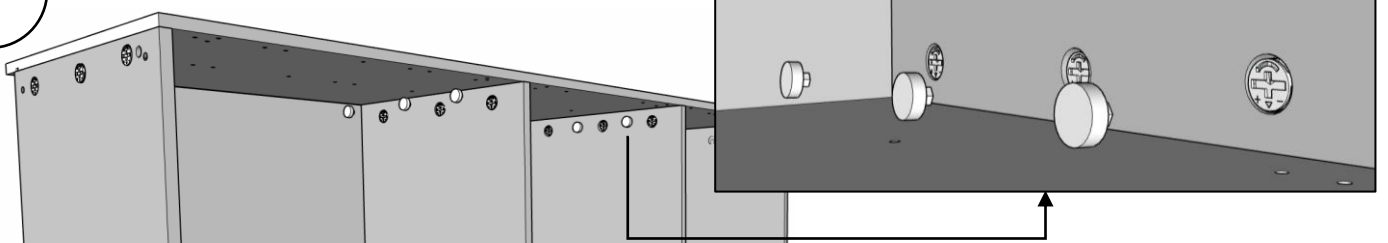


6

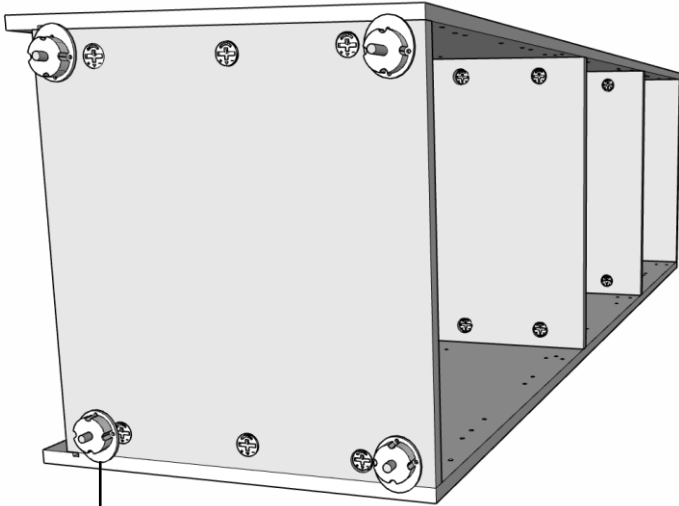


MONTAGE D'UNE COLONNE

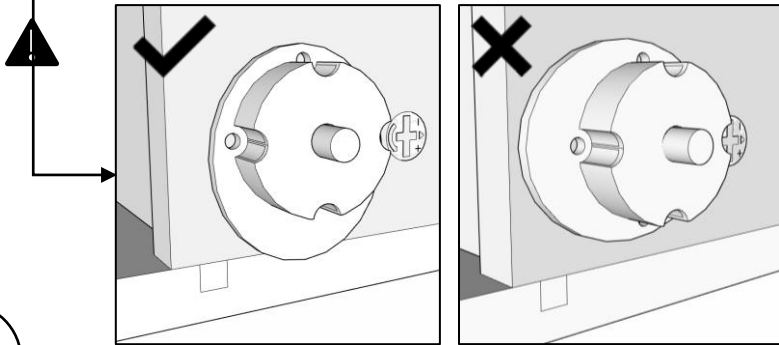
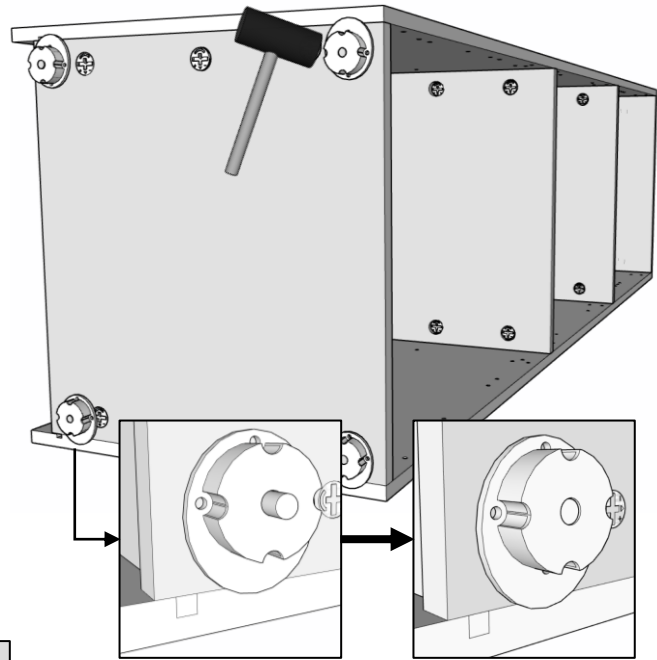
7



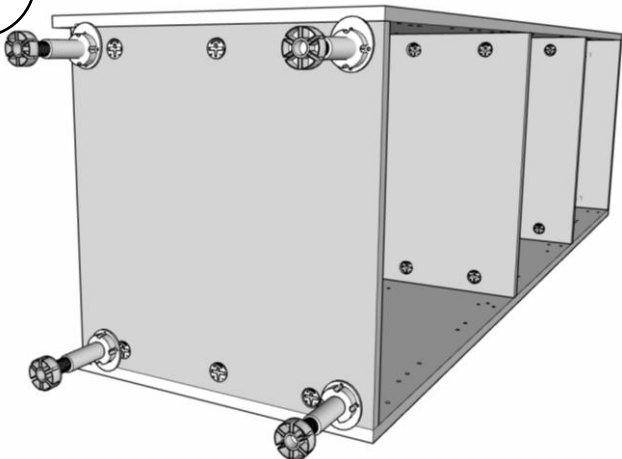
8



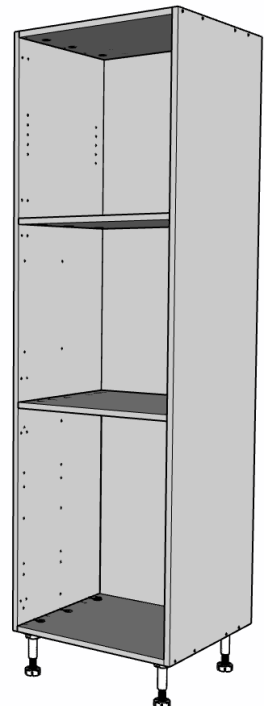
9



10

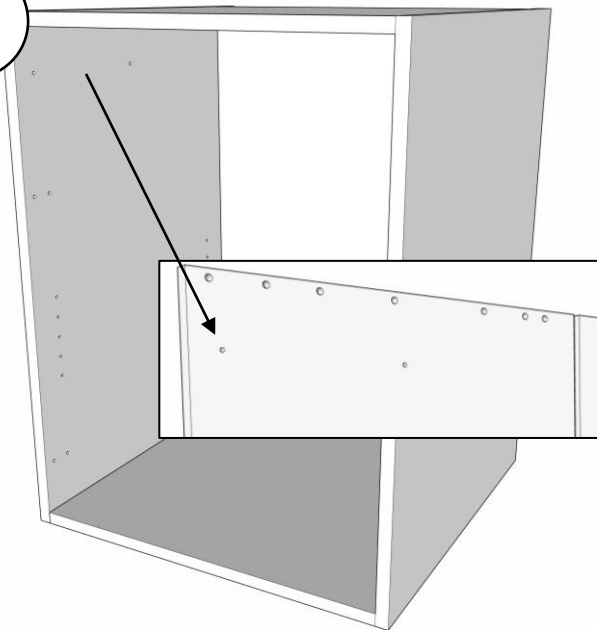


11



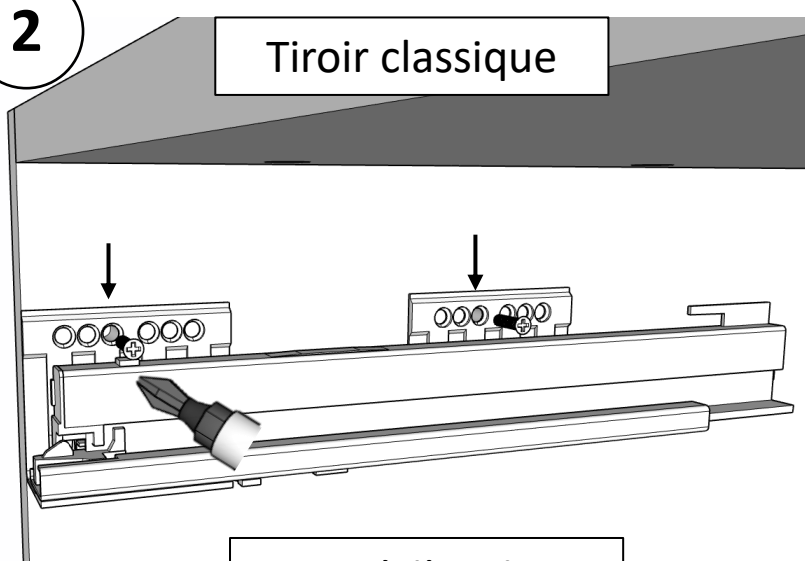
MONTAGE DES TIROIRS

1

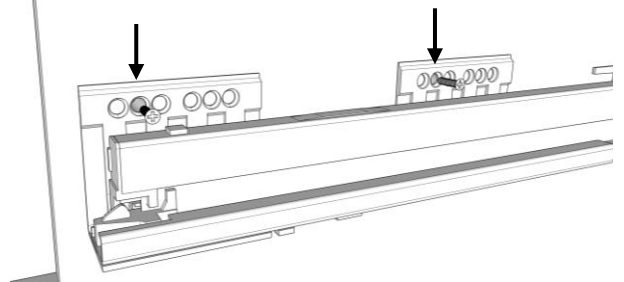


2

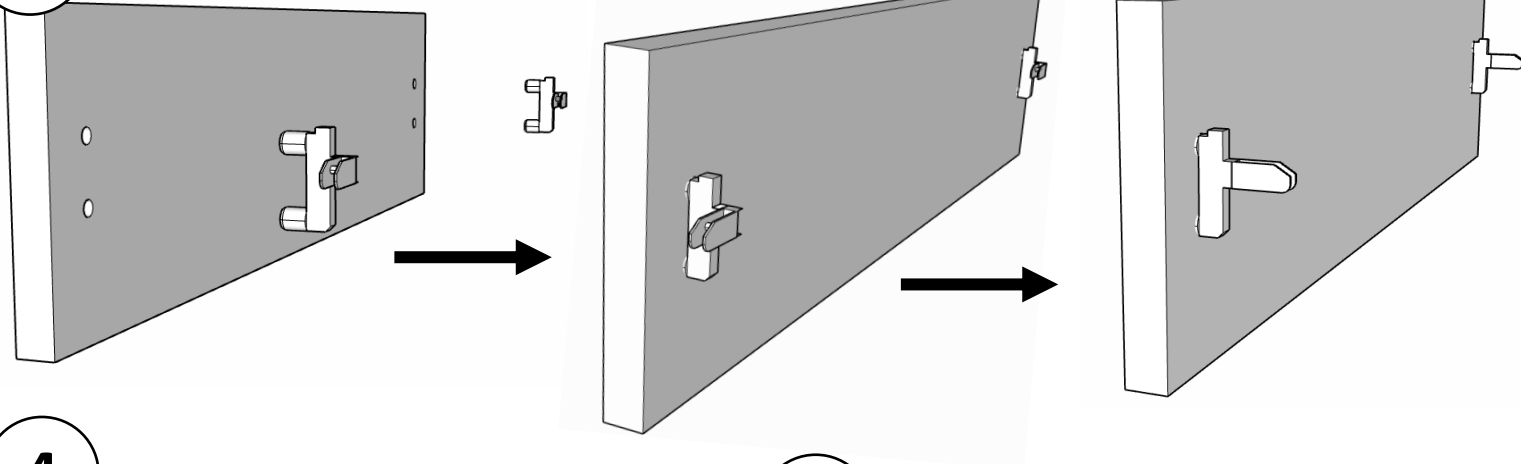
Tiroir classique



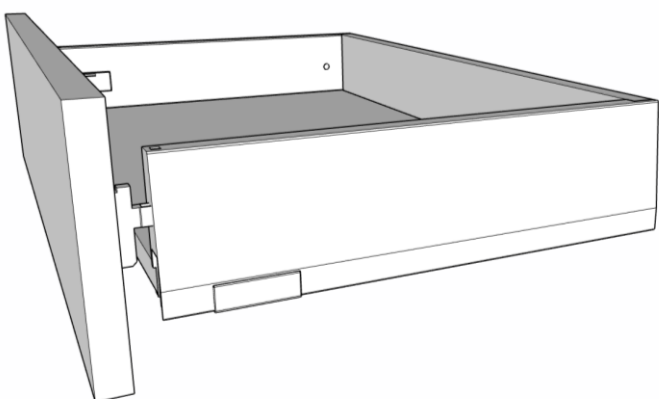
Tiroir à l'anglaise



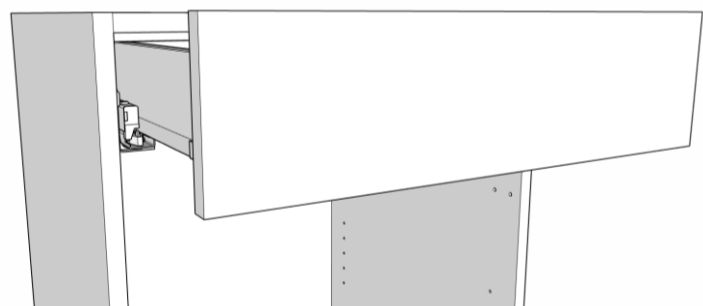
3



4



5



MONTAGE D'UNE PORTE BATTANTE

