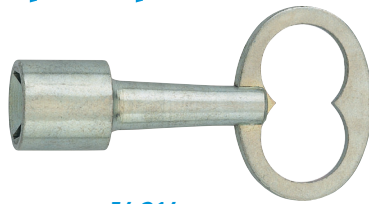
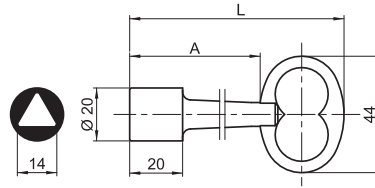


Clés à triangle

pompier



54.314



Clé à triangle pompier de 14 mm

Acier zingué

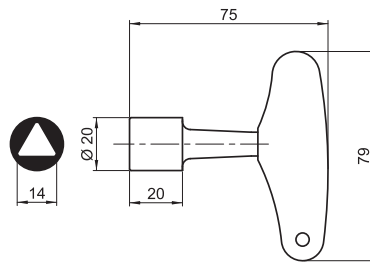
Version standard L = 80 mm

Version longue L = 125 mm

| Réf. | L | A | | |
|---------|-----|----|-------|----|
| 54.314 | 80 | 49 | 64 g | 25 |
| 54.314A | 125 | 93 | 101 g | 10 |



547.314



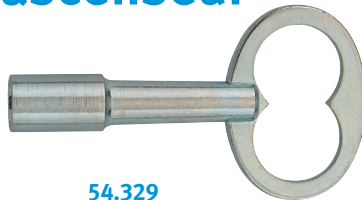
Clé à triangle pompier de 14 mm

Poignée polypropylène rouge

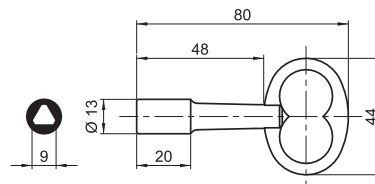
Tige acier zingué

| Réf. | | | |
|---------|----|------|----|
| 547.314 | 14 | 74 g | 10 |

ascenseur



54.329



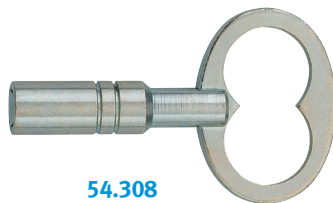
Clé à triangle ascenseur de 9 mm

Norme NF EN 81 ou CNOM02

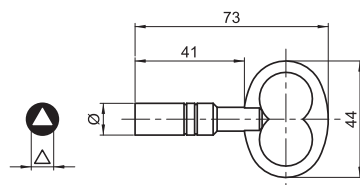
Acier zingué

| Réf. | | | |
|--------|---|------|----|
| 54.329 | 9 | 44 g | 25 |

divers



54.308



Clé à triangle femelle

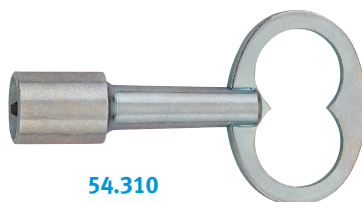
Acier zingué

| Réf. | | Ø | | |
|--------|----|----|------|----|
| 54.306 | 6 | 10 | 33 g | 25 |
| 54.307 | 7 | 11 | 37 g | 25 |
| 54.308 | 8* | 12 | 40 g | 25 |
| 54.309 | 9 | 14 | 45 g | 25 |
| 54.310 | 10 | 16 | 53 g | 25 |

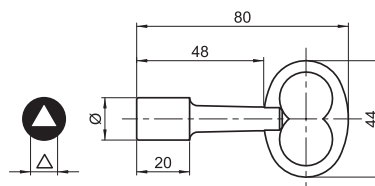
Variante 54.308, longueur = 102 mm

| | | | | |
|--------|----|----|------|----|
| 54.308 | 8* | 12 | 65 g | 25 |
|--------|----|----|------|----|

*Triangle type CNOM01



54.310

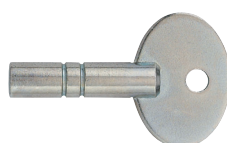


Clé de cadenas d'artillerie

À triangle ou demi-lune

Acier zingué

| Réf. | | Ø | | |
|--------|----|---|------|----|
| 88.304 | △4 | 7 | 16 g | 25 |
| 88.305 | △5 | 8 | 18 g | 25 |
| 88.901 | | 8 | 17 g | 25 |



88.305

