





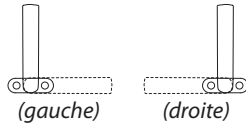
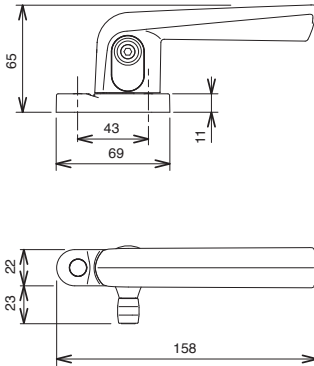
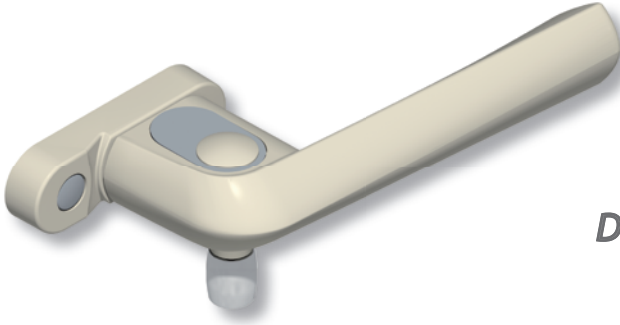
# "DIEZ"

## Poignées à olive et gâches

**DS7150**  **Poignée de condamnation**  
 Pour châssis basculant ou pivotant  
 Inversion rapide de la main  
 Poignée et platine en aluminium  
 Rouleau inox Ø13mm à **6 positions de réglage**

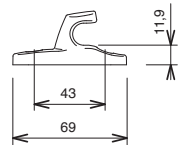
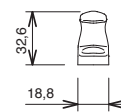
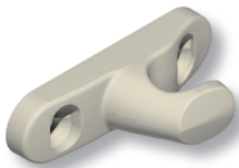
Fixation par vis Ø5 non fournies.

**DS7158**  **Poignée dito DS7150 à rouleau en matériau de synthèse (POM)**

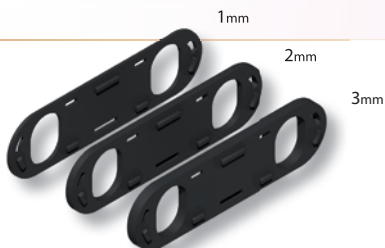
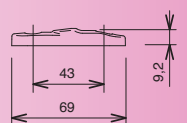
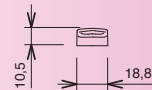


## GÂCHES ET CALES

**DS7148**  **Gâche à retour**  
 En aluminium.



**DS7149** **Gâche plate**  
 En plastique noir ou gris.



**DS7152** **Jeux de cales**  
 Epaisseurs 1, 2 et 3mm  
 En plastique noir ou gris.